



Aimee Sher
MAKES



SWALLOWTAIL V-NECK

*V-neck set in sleeve tee with
lace hem details*

AIMEESHERMAKES.COM

SWALLOWTAIL V-NECK

The Swallowtail V-neck features a butterfly-inspired lace pattern at the hem of the body, and sleek seamed set-in sleeves that fall just off the shoulders. This elegant piece is a statement with stunning lace, paired with an easy-to-fit style.

The neck is finished with a stylish I-cord for a truly sleek finish that frames the face and collar area beautifully. You can choose between short or long sleeve to customize your top!

Size Selection

Sizes A (B, C, D) (E, F, G) (H, I, J) to fit upper bust measurements of 31 (34.25, 37.5, 40.75) (44, 47.25, 50.5) (53.75, 57, 60.25)" / 78.5 (87, 95.5, 103.5) (112, 120, 128.5) (136.5, 145, 153) cm.

Select a size based on the upper bust measurement, but it is also graded for full bust measurements of 30 (34, 38, 42) (46, 50, 54) (58, 62, 66)" / 76 (86.5, 96.5, 106.5) (117, 127, 137) (147.5, 157.5, 167.5) cm.

See Schematic for finished measurements.

The designer is wearing Size B. Their measurements: 32.5" / 82.5 upper bust and 34" / 86.5 cm full bust, with 11" / 28 cm upper arm.

Gauge

24 stitches and 36 rows/rounds = 4" in Stockinette Stitch in the round and flat.

Construction Notes

- The Swallowtail V-neck is a set-in sleeve tee, featuring a fluttery hem paired with an understated, tailored upper torso.
- Worked bottom up, in the round, and then split front and back. Sleeves are worked separately in the round, then shoulders are seamed and sleeves inserted with mattress stitch.
- For confident intermediate to advanced knitters who are comfortable with shaping and lace work.
- All bind-offs should be worked with Sloped Bind-Off.

Credits

Tech Editor: Heather Storta

Sample 1: Mia Rosa-Fischer

Sample 2: Carol Yeh

Photos: Roy & Aimee Sher

Test Coordinator: Mia Rosa-Fischer

Support: Symphony Chau

Pattern Support

support@aimeeshermakes.com

Materials & Tools

Yarn Selection

Choose a fingering weight yarn that will show lace definition well. Wool, wool and cellulose fiber blends, or cellulose fibers can all work for this pattern.

The long sleeve sample was knit with Aimee Sher Makes' [Comfort Silk Linen](#) (400 yards / 365 meters / 3.5 oz / 100 g, 50% Merino + 25% Mulberry Silk + 25% Linen / non-superwash) in the colorway Rose Macaron.

The short sleeve sample was knit using Knitting For Olive [Cotton Merino](#) (275 yards / 250 meters / 50 g / 1.76 oz / 70% organic OCS certified cotton+ 30% RWS certified extra fine merino / non-superwash) in the colorway Blueberry Ice Cream.

Yardage

SHORT SLEEVES

2 (3, 3, 3) (3, 3, 4) (4, 4, 5) hanks of Aimee Sher Makes' Comfort Silk Linen

OR 4 (4, 4, 4) (5, 5, 5) (5, 5, 6) balls of Knitting For Olive's Cotton Merino

OR 720 (810, 910, 980) (1060, 1180, 1250) (1390, 1500, 1610) yards / 660 (740, 820, 890) (970, 1080, 1140) (1260, 1360, 1470) meters of fingering weight yarn.

LONG SLEEVES

4 (4, 5, 5) (5, 5, 6) (6, 6, 7) hanks of Aimee Sher Makes' Comfort Silk Linen

OR 6 (6, 6, 7) (7, 8, 8) (8, 9, 9) balls of Knitting For Olive's Cotton Merino

OR 1380 (1510, 1620, 1740) (1850, 1990, 2090) (2160, 2240, 2420) yards / 1260 (1370, 1470, 1580) (1690, 1810, 1900) (1960, 2040, 2200) meters of fingering weight yarn.

BUST DARTS (OPTIONAL)

15 (15, 20, 20) (20, 25, 25) (25, 30, 30) yards/ meters are required for every inch of bust darts added.

Needles

A (Main Fabric) - US4 (3.5 mm) circular needles in lengths 32" / 80 cm to 60" / 150 cm, to match finished measurements for size selected, and in style for knitting small circumferences such as magic loop or DPN's.

B (Ribbing/Tubular Cast On) - US3 (3.25 mm): circular needles in length 20" / 50 cm, and in style for knitting small circumferences such as magic loop or DPN's

C (Tubular Cast On) - US2.5 (3 mm): in style for knitting small circumferences such as magic loop or DPN's.

Notions

Unique marker for beginning of rnd, waste yarn, extra stitch markers to mark lace repeats (optional), small cable needle to match size of main fabric needle, spare circular needle in a length 20" / 50 cm or longer in the larger size for working three-needle bind off

Printing Guide

Specs: Pages 2-4

Lace Chart: Page 5

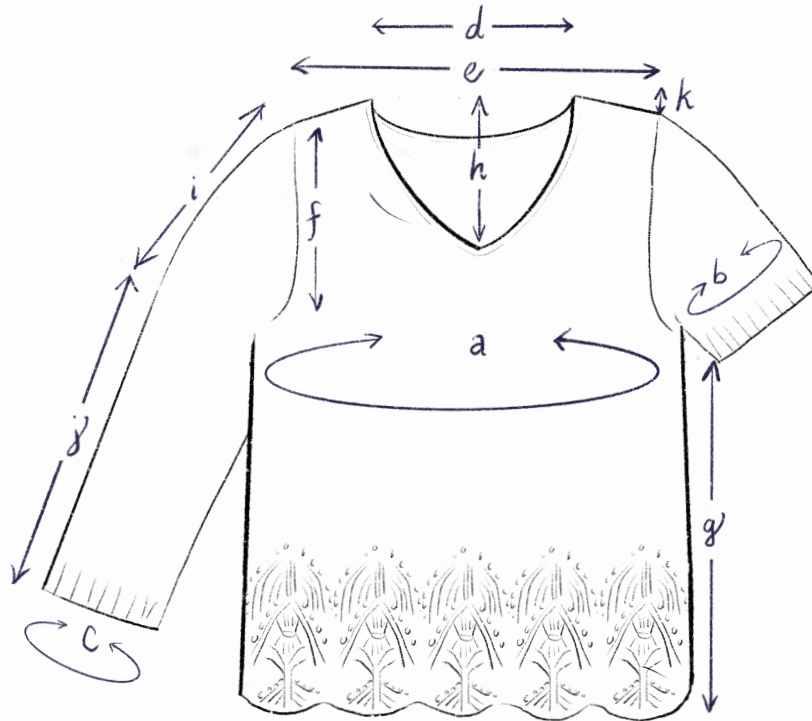
Written Chart: Page 6

Special Techniques: Page 7

Pattern: Pages 8-13

Bust Darts: Pages 13-14

Schematics



A - Chest circumference: 35.25 (39.25, 43.25, 47.25) (50.75, 55.25, 58.75) (63.25, 66.75, 71.25)" / 88 (98, 108, 118) (127, 138, 147) (158, 167, 178) cm

B - Upper arm circumference: 12.75 (13.75, 14.75, 15.75) (16.75, 18, 19) (21.25, 22, 23.25)" / 31.5 (34, 36.5, 39) (41.5, 45, 47.5) (53, 55, 58) cm

C - Wrist circumference (long sleeve only): 9.25 (9.75, 10, 10.75) (11, 11.25, 11.75) (12, 12.25, 12.75)" / 23.5 (24, 25, 26.5) (27.5, 28.5, 29) (30, 31, 31.5) cm

D - Back neck width: 6.75 (6.75, 7, 7.25) (7.25, 7.75, 8) (8.25, 8.75, 8.75)" / 17 (17, 17.5, 18) (18, 19.5, 20) (20.5, 22, 22) cm

E - Back shoulder width: 14.75 (15.25, 15.75, 16.25) (16.75, 17.25, 17.75) (18.25, 18.75, 19.75)" / 37 (38, 39.5, 40.5) (42, 43, 44.5) (45.5, 47, 49.5) cm

F - Armhole length: 6.75 (7.25, 7.75, 7.75) (8, 8.5, 8.75) (9, 9.5, 9.75)" / 17 (18, 19.5, 19.5) (20, 21.5, 22) (22.5, 24, 24.5) cm

G - Body length: 11.5 (11.5, 11.5, 11.5) (11.5, 11.75, 11.5) (11.5, 11.75, 11.75)" / 29 (29, 29, 29) (29, 30, 29) (29, 30, 30) cm

H - V-neck length: 7.5 (7.5, 8, 8.25) (8, 8.5, 8.5) (9, 9, 9.25)" / 19 (19, 20, 20.5) (20, 21.5, 21.5) (22.5, 22.5, 23) cm

I - Sleeve cap length: 4.75 (4.75, 5, 5) (5, 5.25, 5.25) (6.5, 6.5, 6.75)" / 12 (12, 12.5, 12.5) (12.5, 13, 13) (16.5, 16.5, 17) cm

J - Sleeve length from underarm:

Short: 1.5" / 4 cm

Long: 17.75 (17.75, 17.5, 17.5) (17.5, 17.25, 17.25) (16, 16, 15.75)" / 45 (45, 44.5, 44.5) (44.5, 44, 44) (40.5, 40.5, 40) cm

K - Shoulder drop: 1.5" / 4 cm

AFTERWORD



If you choose to share photos on social media, please do tag me ([@aimeeshermakes](https://www.instagram.com/aimeeshermakes)) in your photos and use **#SwallowtailVneck** everywhere on social media. I love to see your makes!

Newsletter:

Be the first to see sneak peeks and find out about new patterns, as well as receive exclusive discounts, special events and test calls.

Subscribe at <http://aimeeshermakes.com/subscribe>

You might also like:



[Relax Tee](#)



[Oolong Tee](#)



Aimee Sher
MAKES