



Aimee Sher
MAKES



CAMPUS CARDI

*Bottom up cardigan with v-neck
and seamless set in sleeves*

AIMEESHERMAKES.COM

CAMPUS CARDI

The Campus Cardi is a classic, preppy cardigan that's perfect for all kinds of layering. Work it up cropped and boxy or full length with A-line shaping, this set-in sleeve beauty is perfectly proportioned. Open to reimagining with color blocking, striping, or even added colorwork, this is a canvas for your creativity.

Classic set in sleeves are worked with a modern seamless construction which allows trying on as you work for fit once the bottom-up body is completed. Optional bust darts ensure a classic fit without the front lifting, in all sizes. Dress this up or down in every outfit. This is a classic for the ages.

Size Selection

Sizes A (B, C, D) (E, F, G) (H, I, J) to fit upper bust measurements of 31 (34.25, 37.5, 40.75) (44, 47.25, 50.5) (53.75, 57, 60.25)" / 78.5 (87, 95.5, 103.5) (112, 120, 128.5) (136.5, 145, 153) cm.

Select a size based on the upper bust measurement, but it is also graded for full bust measurements of 30 (34, 38, 42) (46, 50, 54) (58, 62, 66)" / 76 (86.5, 96.5, 106.5) (117, 127, 137) (147.5, 157.5, 167.5) cm.

The garment measures 35 (39, 43, 47) (50.5, 55, 59) (63, 67, 71)" / 86.5 (96.5, 106.5, 117.5) (126.5, 136.5, 146.5) (156.5, 166.5, 177.5) cm at full bust.

This sample is shown with 5" / 12.5 cm of positive ease in the full bust. When selecting size by upper bust, you may safely go down to 0" ease at the full bust if you have a large difference between the upper and full bust measurements. Comparing your shoulder-to-shoulder measurement with the wingspan measurement in this pattern will also assist in choosing the right size.

If additional room is needed, optional bust darts are available, but require additional yarn and buttons to complete.

Aimee is wearing Size B straight with actual 32.5" / 82.5 cm upper bust and 34" / 86.5 cm full bust.

Gauge

20 sts x 31 rows = 4 x 4" / 10 cm knit flat and in the round in Stockinette stitch with Needle A

Construction Notes

- This pattern is worked bottom up in one piece, then split for fronts and back. Armholes and v-neck are worked at the same time, but written directly (without at the same time instructions) for ease of use.
- The shoulders are joined with Three-Needle Bind Off (see Special Techniques). After wet blocking, the neckband is picked up and worked with button holes, and the armholes picked up for sleeves in the round.
- Button holes are worked using a one-row method.
- Optional bust darts are given in 1" / 2.5 cm increments, in 5 sizes.

Credits

Tech Editor: Heather Storta
Sample: Gillian Bloomingdale
Photos: Lindsey Tyler
Support: Symphony Chau, Mia Rosa-Fischer

Pattern Support

support@aimeeshermakes.com

Materials & Tools

Yarn Selection

Choose a DK to light worsted weight yarn that achieves gauge. I chose a woolen spun yarn that works up nearly worsted weight. The woolen spun yarn gives it a lightweight quality and good structure and “stand.”

The sample featured is Harrisville Daylights (3-ply DK weight yarn, woolen spun, 100% American Cormo & Wool, 100g / 3.5 oz / 229 yards / 250 meters).

Yardage

Yardage was calculated using woolen spun yarn. Testers found that worsted spun may require more yarn, so purchase extra as needed.

Cropped: 4 (5, 5, 5) (6, 6, 6) (7, 7, 8) hanks of Daylights OR 980 (1070, 1150, 1240) (1330, 1410, 1500) (1590, 1680, 1790) yards / 900 (980, 1050, 1130) (1220, 1290, 1370) (1450, 1540, 1640) meters of DK/worsted weight yarn.

Full Length: 5 (6, 6, 7) (7, 8, 8) (8, 9, 9) hanks of Daylights OR 1230 (1350, 1470, 1580) (1660, 1770, 1870) (1960, 2080, 2190) yards / 1120 (1230, 1340, 1440) (1520, 1620, 1710) (1790, 1900, 2000) meters of DK/worsted weight yarn.

Bust darts will require an additional 15 (15, 20, 20) (20, 25, 30) (30, 30, 35) yards or meters per inch added.

Needles

A: Main Fabric: US 6 / 4.0 mm circular needles in 32" / 80 cm or above. Choose a longer length for larger sizes.

B: Ribbing: US 5 / 3.75 circular needles in 32" / 80 cm or above, plus preferred needles for working small circumferences in the round (such as magic loop or DPN's). You may prefer to have a longer needle for the neckline ribbing.

Notions

Waste yarn or stitch holders, tapestry needle, a thinner needle for sewing buttons, and 0.9" / 23 mm buttons in the following amounts:

Cropped: 4 buttons; A-line: 6 buttons

Bust darts: An additional button for every 2" / 5 cm added.

More or fewer buttons may be used as desired to achieve different spacing.

Abbreviations

BO	bind off
DS	double stitch (see Special Techniques > German Short Row)
k	knit
k2tog	knit 2 together
p	purl
p2tog	purl 2 together
RS	right side
ssk	slip, slip, knit
ssp	slip, slip, purl
st(s)	stitch(es)
WS	wrong side

Printing Guide

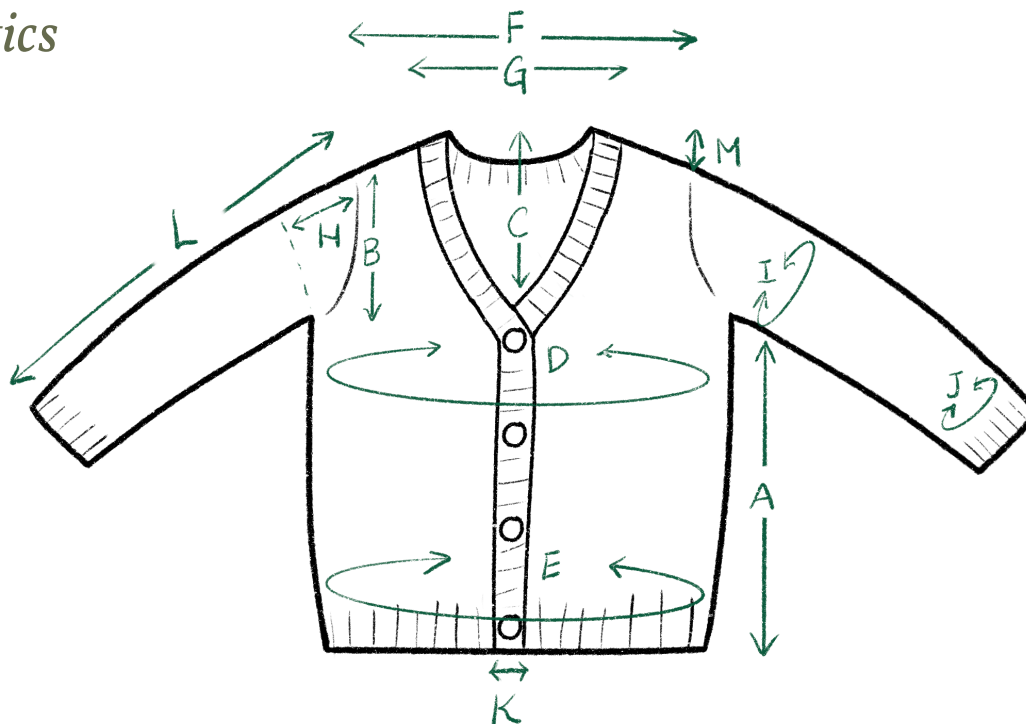
Specs: Pages 2-4

Pattern: Pages 5-9

Bust Darts: Pages 10-12

Special Techniques: Page 12

Schematics



A, Body length - Cropped: 11.5 (11.25, 11, 10.75) (10.25, 10.25, 10) (10, 9.5, 9)" / 29 (28.5, 28, 27.5) (26, 26, 25.5) (25.5, 24, 23) cm; **A-line:** 16.25 (16.25, 16.25, 16.25) (16, 16.25, 16.25) (16.25, 16.25, 16)" / 40.5 (40.5, 40.5, 40.5) (40, 40.5, 40.5) (40.5, 40.5, 40) cm

B, Armhole depth - 6.75 (7, 7.25, 7.5) (8, 8, 8.25) (8.5, 8.75, 9.25)" / 17 (17.5, 18, 19) (20, 20, 20.5) (21.5, 22, 23) cm

C, V-neck depth - 9 (9.25, 9.25, 9.5) (9.5, 9.5, 9.75) (9.75, 10, 10.25)" / 22.5 (23, 23, 24) (24, 24, 24.5) (24.5, 25, 25.5) cm

D, Chest circumference - 35 (39, 43, 47) (51, 55, 59) (63, 67, 71)" / 87.5 (97.5, 107.5, 117.5) (127.5, 137.5, 147.5) (157.5, 167.5, 177.5) cm.

E, Hip circumference (A-line only) - 37.5 (41.5, 45.5, 49.5) (53.5, 57.5, 61.5) (65.5, 69.5, 73.5)" / 94 (104, 114, 124) (134, 144, 154) (164, 174, 184) cm

F, Back shoulder width - 14.5 (14.75, 15.5, 16) (16.5, 16.75, 17.5) (18, 18.5, 18.75)" / 36.5 (37, 39, 40) (41.5, 42, 44) (45, 46.5, 47) cm

G, Back neck width - 6.75 (7.25, 7.25, 7.75) (8, 8, 8.5) (8.5, 8.75, 9.25)" / 17 (18, 18, 19.5) (20, 20, 21.5) (21.5, 22, 23) cm

H, Sleeve cap length - 5 (5.5, 5.75, 6) (6, 6.5, 6.5) (7, 7.75, 7.5)" / 12.5 (15, 14.5, 15) (15, 16.5, 16.5) (17.5, 19.5, 19) cm

I, Upper arm circumference - 12.75 (14, 14.75, 15.5) (16.75, 18, 19.5) (21.25, 22.75, 24)" / 32 (34, 37, 39) (42, 45, 49) (53, 57, 60) cm

J, Wrist circumference - 9.5 (10.5, 10.5, 11.25) (11.25, 12, 12) (12, 12.75, 12.75)" / 14 (15, 14.5, 15) (15, 16.5, 16.5) (17.5, 19.5, 19) cm

K, Neck finishing - 1.25" / 3 cm

L, Sleeve length, including cap - 22.5" / 57 cm

M, Shoulder Drop: 1.5" / 4 cm

All figures except D-E and K are given without the neckband finishing for blocking purposes.